

The 55th Elsworth & District Show

Elsworth School on Sunday 2nd September 2012

Show President: Mrs Sue Chapman

To be opened by: Sheena Farrer

Grounds open at 1.45pm

Official opening at 2pm

Presentation of Cups at 3.15pm

Sports at 3.30pm

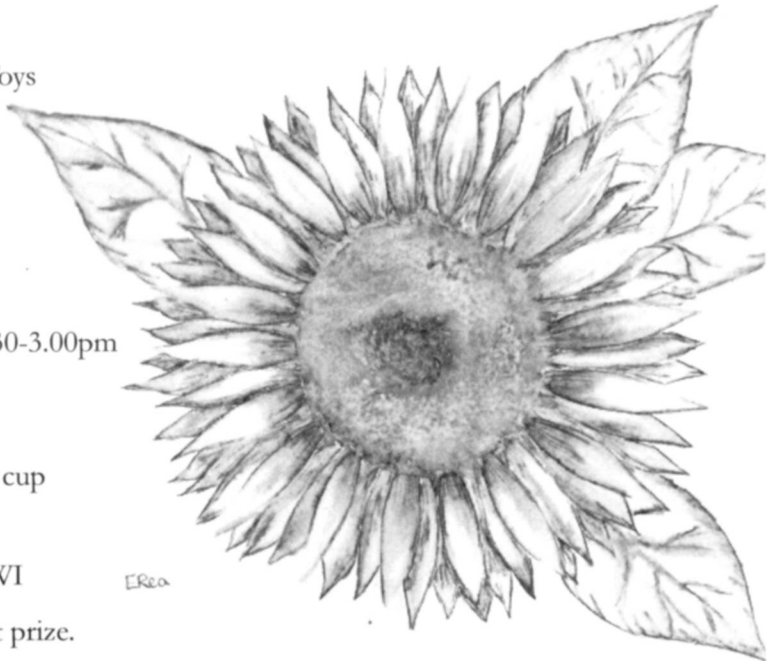
Raffle draw at 4.15pm

Auction of Produce by Tim Hegan at 4.30pm

Attractions:

Children's Books and Toys
Plant and Herb Stalls
Phoenix Cards
Ice Cream
Coconut Shy
Fortune Teller
Children's Tombola
Craft Stalls
Punch & Judy Show 2.30-3.00pm
Cider Stall
Children's Games
Face painting
Tug of War - challenge cup
Pimms Tent
BBQ
Afternoon Tea by the WI

Raffle: £50.00 cash first prize.



Admission £1, Children free

Show Chairperson & contact: Sue Chapman, 20 Church Lane, Elsworth. 01954 267568
<http://elsworthshow.blogspot.co.uk>

Order your heating oil together and save money!

Join Agricole Oil's
'Daily Mini Bulk-Buy Scheme'
or our

'Monthly Bulk-Buy Scheme'
(on the 1st day of each month)

and reduce your heating oil bills today!

Ring me before you buy
Jeremy Cole (01954) 719452

agricole oil brokerage service
www.heating-oil-prices.co.uk

AMANDA PLATT PILATES

Pippa Middleton used a Pilates Foundation teacher to shape her body and improve her posture for the royal wedding as seen in all the papers

Now you can too!

Classes in Elsworth, Wednesday evenings

Hilton, Thursday mornings

St Ives, Thursday evenings

Small classes, Beginner and Intermediate levels

Call me on 07733 307475

www.amandaplattpilates.co.uk

www.pilatesfoundation.co.uk

ASH CROFT

VETERINARY SURGERY

169 ST NEOTS ROAD

HARDWICK, CAMBS CB23 7QJ

TEL: (01954) 210250

UNIT 1 PENDRILL COURT

ERMINE STREET,

PAPWORTH CB23 3UY

TEL: (01480) 831615

Consultation by appointment only

Full 24hr Emergency Cover

www.ashcroftvet.co.uk

Jeff Helme

Thatching Services Ltd
Traditional Master Thatching Specialists

YOUR LOCAL THATCHER
OVER 25 YEARS EXPERIENCE
HIGH STANDARD QUALITY WORKMANSHIP
FREE QUOTATIONS
INSURANCE SURVEYS UNDERTAKEN

Telephone: 01954 267922

Mobile: 07702 974514

Email: Jeff@JefftheThatcher.co.uk

Web: JefftheThatcher.co.uk

4A School Lane
Conington
Cams
CB23 4LP



Art in the Garden

Children's Art Workshops in Elsworth

Term-time after school and holiday art classes for children
1 to 1 sessions for adults and children, including GCSE tuition.
We can also provide tailor made workshops or children's parties.
Workshops include painting & drawing, batik, textiles,
printmaking & sculpture.

For information, please contact Sarah Hutchinson on:
01954 267796 / 07425 167891
sarah@elsart.co.uk
7 The Drift, Elsworth, Cambridge CB23 4JN



Ascent

Computer Services
www.ascentcomputers.com

Computer Repair Centre Now Open in Huntingdon

Unit 1 Alms Close, Stukeley Meadows Industrial Estate
Huntingdon PE29 6DY

All Desktop PC & Laptop Problems Solved

- Computer Health Checks
- Virus & Spyware Removal
- Laptop LCD Screen Replacement
- Laptop Power Socket Repair
- Slow Computers Made Faster!

Highly competitive prices and unrivalled customer service!

Come and visit us at our specialist Computer Repair Centre
in Stukeley Meadows, Huntingdon



www.ascentcomputers.com

01480 262 262

All at **eastlife** are happy to support
the 2012 Elsworth and District Show



www.eastlife.co.uk



Elsworth Security Systems

Complete CCTV System Installations
CCTV Upgrades - Maintenance & Repairs
Burglar Alarms & Entry Systems

Business: 01954 267753 *Rik Fisher* Mobile: 07799 614564

elsworthsecuritysystems@hotmail.co.uk



CLOVER HOUSING

Your Local Building Maintenance & Repair Company

- PLUMBING
- CARPENTRY
- PAINTING & DECORATING
- ALL BRICK & TILE WORK
- WORKTOP & CERAMIC REPAIR
- KITCHEN & BATHROOM INSTALLATIONS
- FENCING, DRIVEWAYS & PATIOS
- GARDEN CLEARANCE & MAINTENANCE
- PROPERTY MAINTENANCE
- SASH WINDOW REPAIR

- ❑ Have you been messed around by Tradesmen or Handyman Services in the past?
- ❑ Would you like a reliable, honest service that doesn't charge a call out fee?
- ❑ Looking for a local company for all your building and property maintenance requirements?
- ❑ Considering an extension, new patio or decking, new cart lodge or garden wall?
- ❑ Need a local reliable company for all those jobs, small or large?
- ❑ Tired of paying too much for things that you could do yourself but just don't have enough time?
- ❑ Don't have the required skills and looking for a reliable competitive service?
- ❑ Or just simply need help in getting those jobs done that never get seen to?

Quality Work at Affordable Prices, delivered by a Friendly Reliable Company. CALL US NOW ON 01954 768144 - www.cloverhousing.co.uk

WE SPECIALISE IN DELIVERING:

- ❑ PROPERTY MAINTENANCE
- ❑ EXTERIOR PROPERTY MAINTENANCE
- ❑ PROPERTY REFURBISHMENT
- ❑ PROPERTY RENOVATIONS
- ❑ SPECIALIST REPAIRS
- ❑ LANDSCAPING

WE WORK WITH:

- ❑ GENERAL PUBLIC
- ❑ LETTING AGENTS
- ❑ PRIVATE LANDLORDS
- ❑ LOCAL COUNCILS
- ❑ HOUSING ASSOCIATIONS
- ❑ COMMERCIAL BUILDING COMPANIES

Clover Housing has been built from the ground up to provide a complete and professional property service to our residential and commercial customers.

Even if it is just advice you need or pricing please do not hesitate to contact us, quotations and advice are free and our quotations are prepared and delivered professionally and quickly.

Local Telephone: 01954 768144

Email: enquiries@cloverhousing.co.uk

Or simply visit us at:

www.cloverhousing.co.uk

OUR GOALS WITH ALL OUR CUSTOMERS:

- ❑ TO PROVIDE THE BEST CUSTOMER SERVICE AT ALL TIMES
- ❑ ALWAYS BE PUNCTUAL & POLITE
- ❑ TO MAKE EVERY CUSTOMER FEEL THAT THEY ARE THE ONLY CUSTOMER
- ❑ BE PROFESSIONAL & FRIENDLY IN EVERYTHING WE DO
- ❑ BE COMPETITIVELY PRICED
- ❑ TO ENSURE WE DELIVER QUALITY WORKMANSHIP AT ALL TIMES
- ❑ THAT OUR CUSTOMERS KEEP RETURNING BECAUSE THEY LIKE OUR WORK
- ❑ THAT OUR CUSTOMERS ARE HAPPY TO RECOMMEND US

EMPSON GARAGES



BOB EMPSON & SONS, THE GARAGE, ELSWORTH, CAMBS

We are a family run garage dealing in:

MOT (Class 3 and 4) • Servicing • Body work and accident repair

all types of repair work undertaken on all types of car

full plug in diagnostic facilities

Telephone: Workshop 01954 267231

Body Shop 01954 267878

CLASSES

Section A COOKERY

All baked items to be displayed in a clear plastic bag (not cling film)

- Class 1 Apple pie (pastry top and bottom)
- Class 2 Victoria sandwich (7-8") *Hint: Castor sugar on top and jam filling*
- Class 3 Fruit cake (8")
- Class 4 Four shortbread biscuits
- Class 5 Four fruit scones
- Class 6 Six handmade sweets presented in a box
- Class 7 Four decorated cup cakes
- Class 8 Loaf of white bread (handmade)
- Class 9 Loaf of brown bread (handmade)
- Class 10 Loaf machine made bread
- Class 11 Fancy bread
- Class 12 Four sausage rolls
- Class 13 Savoury flan (please label contents)

Section B PRESERVES

Hint: Jars with lids do not need a wax disc as well.

Plain lids only. Maximum two entries per class

- Class 14 Jar of jam (soft fruit)
- Class 15 Jar of jam (stone fruit)
- Class 16 Jar of jelly (any kind)
- Class 17 Jar of marmalade
- Class 18 Jar of chutney
- Class 19 Jar of lemon curd
- Class 20 Jar of pickles

Section C DRINKS

Hint: Use a clear bottle with stopper or screwcap

- Class 21 One bottle homemade wine
- Class 22 Sloe Gin
- Class 23 Any other fruit liqueur
- Class 24 Any non alcoholic home made drink



31

Section D EGGS

- Class 25 Six hen's eggs (white/tinted)
- Class 26 Six hen's eggs (brown)
- Class 27 Six eggs (any other sort or colour— please label)

Section E FRUIT

Hint: Fruit should have stalks/ calyces on. Don't polish the fruit.

- Class 28 Five dessert apples (1 variety)
- Class 29 Five cooking apples (1 variety)
- Class 30 Five pears (1 variety)
- Class 31 Five plums (1 variety)
- Class 32 Dish of any other fruit
- Class 33 Collection of fruits



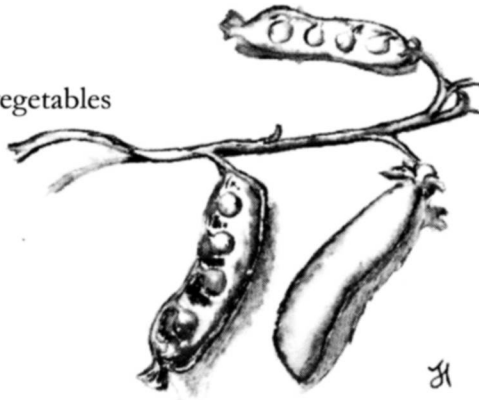
Section F FLOWERS & PLANTS

- Class 34 Three roses (any variety or varieties)
- Class 35 One spray of roses (florabundi)
- Class 36 Three asters (any variety or varieties)
- Class 37 Three dahlias (4 inches and under)
- Class 38 Three dahlias (over 4 inches)
- Class 39 One succulent
- Class 40 One cactus
- Class 41 One flowering pot plant
- Class 42 One foliage pot plant
- Class 43 Three sprays of flowers
- Class 44 Three stems of gladioli
- Class 45 Vase of mixed cut garden flowers



Section G VEGETABLES

- Class 46 Collection of six different vegetables
(points awarded for arranging)
- Class 47 Six potatoes (white)
- Class 48 Six potatoes (coloured)
- Class 49 Six runner beans
- Class 50 Six beans (any type)
- Class 51 Three courgettes



- Class 52 Three carrots (any variety)
Hint: Carrots should be presented with 3" stalks on
- Class 53 Three onions grown from seed
- Class 54 Three onions grown from sets
- Class 55 Two vegetable marrows (not exceeding 300mm, 12" length)
- Class 56 Heaviest marrow (one prize only)
- Class 57 One lettuce
- Class 58 Three beetroot (any variety)
- Class 59 Six shallots
- Class 60 One cucumber (indoor)
- Class 61 One cucumber (outdoor)
- Class 62 Six tomatoes (cherry)
- Class 63 Six tomatoes (large)
- Class 64 One truss of ripening tomatoes
- Class 65 One cabbage (any weight)
- Class 66 Three sweet peppers (same or mixed)
- Class 67 Three peppers (any other type)
- Class 68 Two sweetcorn
- Class 69 Exhibits of any other vegetable not included above
- Class 70 Odd shaped vegetable(s)
- Class 71 Heaviest pumpkin
- Class 72 Two squash



Section H FLORAL ARRANGEMENTS

- Class 73 The Olympics
- Class 74 Diamond Jubilee
- Class 75 A decorated eggcup

Sections I,J,K,L

Items not previously exhibited.

Section I NEEDLEWORK

- Class 76 Soft furnishings
- Class 77 Sewing (any garment)
- Class 78 Embroidery, tapestry, cross stitch
- Class 79 Knitting

Section J HANDICRAFTS

- Class 80 Any article
- Class 81 Paper craft

Section K PHOTOGRAPHY

Maximum two entries per class

Black & White or Colour

Photographs must be no larger than A5 and not framed.

Free membership to Swavesey Camera Club for overall winner in classes 82-85 to entrants aged 16 and over.

- Class 82 A girl's best friend
- Class 83 Speed
- Class 84 Home
- Class 85 Red, white & blue

Section L PICTURES (original)

Suitable for hanging if possible

- Class 86 Oils & acrylics
- Class 87 Watercolours
- Class 88 Black & white
- Class 89 Any other medium

Section M CHILDREN – 16 years and under

(age of child to be stated on entry)

Cookery & handicraft

KS1 (School Years R, 1 & 2)

- Class 90 Four cup cakes
- Class 91 Four decorated digestive biscuits
- Class 92 Handicraft: Junk model

KS2 (School years 3-6)

- Class 93 Four flapjacks
- Class 94 A plate of homemade sweets
- Class 95 Handicraft: Miniature garden on a dinner plate



KS3 (School years 7-11)

- Class 96 Four small brownies
- Class 97 A small homemade pizza
- Class 98 Handicraft: Miniature garden on a dinner plate

Art (Max size A4)

Pre-school

- Class 99 Any picture, any medium (4 years and under)

Theme for all the following children's art classes - Fire

- Class 100 Reception
- Class 101 School years 1&2
- Class 102 School years 3&4
- Class 103 School year 5
- Class 104 School year 6
- Class 105 School years 7-11

Open Classes (for any child up to school year 11)

- Class 106 Vegetable monster
- Class 107 Home grown vegetable
- Class 108 Lego model (an original not a kit)
- Class 109 Photographic print, black & white or colour, any subject. (Max two per person)
- Class 110 Handicraft: Any article

Section N CEREALS

- Class 111 Wheat, one sample (28lbs hard)
- Class 112 Wheat, one sample (28lbs soft)

Section O SUNFLOWER SECTION

- Class 113 Largest sunflower head (bring to show to display)
- Class 114 Tallest sunflower (please don't bring to show. but email the height, measured from ground to top of stem, to elsworthshow@gmail.com)



THE RULES

1. Entrants must be residents or growers of Elsworth, Knapwell, Boxworth or Conington and produce must be grown in the district.
2. Everything entered must be grown or made by the Exhibitor except flowers used in floral arrangements.
3. Entries 30p. Entries by Children aged 16 years and under are free in Section M only.
4. How to Enter
 - i. In person with entry form at the Poacher on Friday 31st August between 6-9pm or to the school on Saturday 1st September between 4-6pm
 - ii. Drop off entry form at designated collection points in each village by noon, Friday 31st August. (see entry form for details)
 - iii. Email entries to sarah@highbarns.co.uk by 8pm on Friday 31st August

THERE WILL BE NO ENTRY FORMS ACCEPTED ON SUNDAY MORNING

5. Exhibits may be left for staging by the stewards on Saturday 1st September between 4.00pm and 6.00pm OR by the exhibitor between 8.00am and 9.45am on Sunday 2nd September
6. Exhibits must not be removed before 4.00pm on the day of the show. The Committee will be very grateful for any exhibits left for auction at 4.30pm.
7. Exhibitors may make more than one entry in any one class. Each exhibit must be accompanied by an entry form and appropriate fee.
8. Exhibitors must provide own plates, vases etc. as they require. The Committee will not be responsible for any breakage or loss of such items.
9. Each class may be judged 1st, 2nd 3rd. Prizes awarded:

FIRST	£2.00
SECOND	£1.00
THIRD	50p
10. Where the entries are less than four in any one class, the awarding of more than one prize will be at the discretion of the judge.
11. In case of any dispute the Committee's decision will be final.

ANNUAL CHALLENGE CUPS AND PRIZES WILL BE AWARDED AS FOLLOWS:

Annual Challenge Cups

Annual Challenge Cups	Most points
Elsworth and District Show Challenge Cup	Overall
Elsworth, Knapwell and Conington Womens Institute Challenge Cup	Cookery, preserves and drinks (Sect A,B and C)
Mrs Heath Memorial Cup	Preserves (Section B)
Arnold Hodson Memorial Trophy	Fruit (Section E)
Elsworth and District Show Cup	Flowers and plants (Sect F)
Elsworth Branch Royal British Legion Cup	Vegetables (Section G)
Elsworth, Knapwell and Conington Womens Institute Vase	Floral Arrangements (Section H)
Boxworth Women's Institute Challenge Cup	Needlework (Section I)
Girls Cup	Children (Section M) (girl)
Boys Cup	Children (Section M) (boy)
J Mitham Cup	Classes 92,95,98,106 and 108

Prizes

One Year Membership of Swavesey Camera Club	Overall winner in Photography (Section K) (16yrs and over)
Tug of War Challenge Cup	Tug of war

Points awarded: 1st 3 points 2nd 2 points 3rd 1 point.

Summer Holiday Tuition

OPEN every holiday week

Our experienced teachers provide lessons that are both fun and beneficial to help stop the summer learning loss.

- Maths & English for ages 5-16
- Catch up on missed work
- Keep holiday brains busy & active
- Lessons always available after school or on Saturdays

Excelr8 Learning



Primary Booster
Catch Up
Entrance Exams
SATs
GCSEs
A Level

Holiday offers

Book 10 lessons and have
the 1st two **FREE**

Book 5 lessons and have
the 1st **FREE**

FREE TRIAL Lessons



2 Great Cambridge Tuition Centres

Hardwick 01954 211888 Milton 01223 429923

www.excelr8learning.co.uk



S₂ Partnership Ltd
Intelligent Risk Management

The S₂ Partnership supports the 2012 Elsworth Show

The S₂ Partnership provides risk management consultancy, training and software to clients encompassing Health & Safety, Environmental, Fire, Asbestos, Water Hygiene and Crisis Management.

info@s2partnership.co.uk
Tel: 01954 267788

The S₂ Partnership
14-17 Avenue Business Park
Elsworth
CB23 4EY



Looking for an electrician?

We cater for all your electrical & wiring requirements around the home, from additional lights or sockets to extensions or a complete re-wire.

Contact Alan on 01954 267796 / 07425 167892 or email alan@thirteen-one.co.uk



WILLIAM HELLYER
TREE SURGERY
ARBORICULTURE

TEL: 01954 267494 MOBILE: 07766 093037

PAPWORTH CARRIAGE Co.
PRIVATE HIRE TAXI SERVICE
PLEASE CALL FOR QUOTE OR TO BOOK
01480 831955
WWW.PAPWORTHCARRIAGECOMPANY.COM

PLEASE NOTE NEW TELEPHONE NUMBER

FRIENDLY & COURTEOUS TAXI SERVICE

- Competitive rates
- Pre Booking Essential
- Large Luggage Area
- Long and Short Distance
- Airports, Seaports, Theatre
- Child Seat / Booster available

The Poacher

1 Brockley Road Elsworth Cambs CB23 4JS

Tel 01954 268167

www.theelsworthpoacher.co.uk

Neil & Caroline welcome you to the Poacher, with great ales, great home cooked food and a friendly relaxed atmosphere.

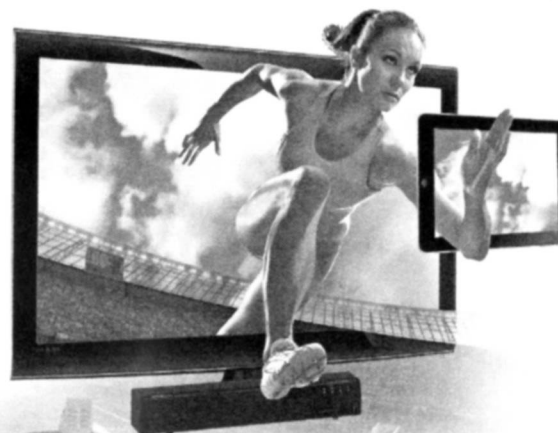
Lunch served 12 until 2 p.m. Monday to Saturday

Traditional Sunday Lunch served 12 until 2 p.m.

Evening meals served 6:30 until 9 p.m. Monday to Saturday

- Beer garden
- Children & Dogs welcome

Winning designs for your business.



Based in Elsworth, we create effective graphic and website design to make sure that your business retains that vital competitive edge.

- Brochures
- Annual Reports
- Sales and product literature
- Websites and apps
- Advertising
- Branding & logo design
- Email marketing
- and much more...

We're ready to help with all of your marketing requirements. Please call **01954 267954** or drop in for a chat!



www.edgeagency.co.uk

edge Creating better business by design

12 AVENUE BUSINESS PARK BROCKLEY ROAD ELSWORTH CAMBRIDGE CB23 4EY studio@edgeagency.co.uk

CAMBRIDGE PAVIORS LTD

SPECIALISTS IN BLOCK AND BRICK PAVING

■ Driveways ■ Roads ■ Patios ■ Car Parks ■ Pathways ■ Walls

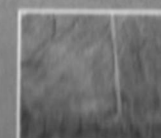
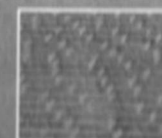
Domestic & commercial.

Professional & highly skilled team with over 15 years experience.

Tel: 01954 267999 Fax: 01954 267998

www.cambridgepaviors.co.uk info@cambridgepaviors.co.uk
Avenue Business Park, Brockley Rd, Elsworth, Cambs CB23 4EY

Work team NVQ level 2 qualified in the laying of paving



Elsworth Village Shop

Open weekdays 8am - 6pm,
weekends and public holidays 9am - 12 noon.

We sell a whole range of locally produced food
alongside everyday basics

Tom's Cakes; Grasmere Farm sausages and bacon;
North's Bakery; speciality cheese; Corkers Crisps from
potatoes grown just up the road!

Eat in or take away. Have you tried our delicious coffee?
Make the most of the 'Indian Summer' and sit outside
to enjoy a cup with a piece of cake.

Any produce left over from the show?
The shop would love to sell your home-grown produce,
we don't mind if you didn't win!

The Shop Committee would like to thank
all our lovely volunteers and customers
for their support over the past year.

