

# The 47th Elsworth & District Show

Elsworth School

Saturday August 28th 2004

To be opened by Mr Nicholas Smith  
Head teacher of Elsworth C E School

Show President Zena Chapman

**1.45 pm**

Grounds open

**2 pm**

Official opening

**3.15 pm**

Presentation of cups

**4.30 pm**

Auction of produce

by Mr Don Barrett-Harley

Fortune Teller

Plant stall

Countryside Watch

Conjuror

Coconut Shy

Beekeeping

Badger & Mammal Consultant

Pet show

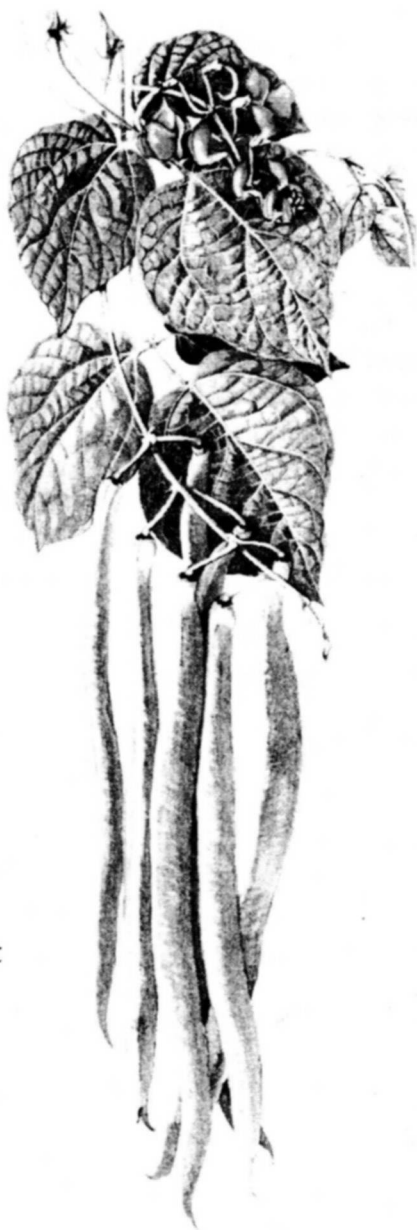
Children's Games

Sports

Ice Cream

Refreshments

Raffle \*£50 Cash First Prize



Admission 50p Children 12 & under 20p

## CLASSES

### Section A **COOKERY**

- Class 1 Apple Tart (pastry top and bottom)
- Class 2 Victoria Sandwich (8")
- Class 3 Fruit Cake (8")
- Class 4 Savoury Flan
- Class 5 Loaf of White Bread (handmade)
- Class 6 Loaf of Brown Bread (handmade)
- Class 7 Naughty but Nice
- Class 8 Fancy Breads
- Class 9 Loaf machine made bread
- Class 10 4 Sausage Rolls
- Class 11 4 Shortbread Biscuits
- Class 12 4 Fruit Scones

### Section B **PRESERVES** (1lb jars)

- Class 13 Jar of Jam (soft fruit)
- Class 14 Jar of Jam (stone fruit)
- Class 15 Jar of Jelly (any kind)
- Class 16 Jar of Marmalade
- Class 17 Jar of Chutney
- Class 18 Jar of Lemon Curd (small jar)
- Class 19 Jar of Pickles

### Section C **WINE & BEER**

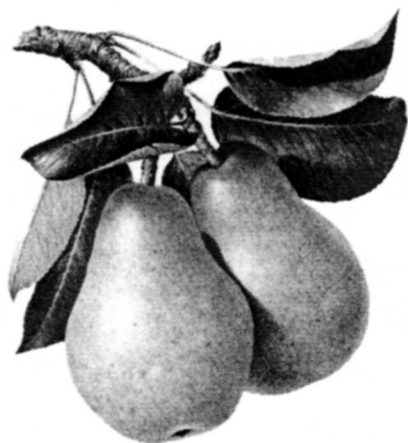
- Class 20 1 Bottle (dry) wine in clear bottle with cork
- Class 21 1 Bottle (sweet) wine
- Class 22 1 Bottle beer (suitable bottle)
- Class 23 Any non alcoholic home-made drink

### Section D **EGGS**

- Class 24 6 Eggs (white)
- Class 25 6 Eggs (brown)
- Class 26 6 Eggs (any other)

### Section E **FRUIT**

- Class 27 5 Dessert Apples (1 variety)
- Class 28 5 Cooking Apples (1 variety)
- Class 29 5 Pears (1 variety)
- Class 29a 5 Plums (1 variety)
- Class 30 Dish of any other fruit
- Class 31 Collection of fruits

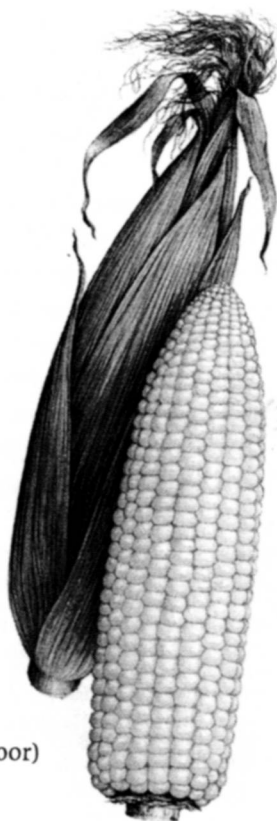


### Section F **FLOWERS**

- Class 32 3 Roses (any variety or varieties)
- Class 33 1 Spray of roses (florabundi)
- Class 34 6 Asters (any variety or varieties)
- Class 35 6 Dahlias (4 inches and under)
- Class 36 6 Dahlias (over 4 inches)
- Class 37 1 Succulent
- Class 38 1 Cactus
- Class 39 1 Flowering pot plant
- Class 40 1 Foliage pot plant
- Class 41 3 Sprays of flowers
- Class 42 3 stems of Gladioli
- Class 43 Vase of mixed cut garden flowers

## Section G **VEGETABLES**

- Class 44 Collection of six different vegetables  
(points awarded for arranging)
- Class 45 6 Potatoes (white)
- Class 46 6 Potatoes (coloured)
- Class 47 6 Runner Beans
- Class 48 6 Beans (any type)
- Class 49 3 Courgettes
- Class 50 3 Carrots (any variety)
- Class 51 3 Onions grown from seed
- Class 52 3 Onions grown from sets
- Class 53 2 Vegetable Marrows  
(not exceeding 300mm, 12" length)
- Class 54 Heaviest Marrow (one prize only)
- Class 55 1 Lettuce
- Class 56 4 Beetroot (any variety)
- Class 57 6 Shallots (large)
- Class 58 6 Shallots (small)
- Class 59 6 Tomatoes (outdoor)
- Class 60 6 Tomatoes (grown under glass)
- Class 61 One truss of ripening Tomatoes (outdoor)
- Class 62 1 Cabbage (any weight)
- Class 63 1 Cucumber (ridge)
- Class 64 3 Sweet Peppers (same or mixed)
- Class 65 Any other Pepper
- Class 66 2 Sweetcorn
- Class 67 Exhibits of any other vegetable not included above
- Class 68 Odd shaped vegetable
- Class 69 Heaviest pumpkin
- Class 70 2 Squash



## Section H **FLORAL ARRANGEMENTS**

- Class 71 Olympics
- Class 72 Informal arrangement in a teacup
- Class 73 Foliage and grasses

## Section I **NEEDLEWORK**

- Class 74 Soft furnishings
- Class 75 Sewing (any garment)
- Class 76 Embroidery, tapestry, cross stitch
- Class 77 Knitting

## Section J **HANDICRAFTS**

- Class 78 Any article (not previously exhibited)

## Section K **PHOTOGRAPHY** (Black & White or Colour)

- Class 79 Family
- Class 80 Wild life
- Class 81 Seaside
- Class 82 My garden

Photographs must be no larger than A5 and not framed.

Free membership to Swavesey Camera Club for first prize winners in classes 79-82 to entrants aged 16 and over.

## Section L **PICTURES** (original)

- Class 83 Oils
- Class 84 Water Colour

- Class 85 Black & White  
 Class 86 Any other medium

### Section M CHILDREN

16 years and under – age of child to be stated on entry

- Class 87 4 Decorated sponge buns (7 years and under)  
 Class 88 2 Gingerbread men (11 years and under)  
 Class 89 4 Small meringues (16 years and under)  
 Class 90 4 decorated biscuits (7 years and under)  
 Class 91 4 flapjacks (11 years and under)  
 Class 92 A plate of homemade sweets (16 years and under)  
 Class 93 Art – (5 years and under) Dinosaurs  
 Class 94 Art – (6–7 years) Stars and spaceships  
 Class 95 Art – (8 years) My Holiday  
 Class 96 Art – (9–10 years) Lord of the Rings  
 Class 97 Art – (11 years) The Olympics  
 Class 98 Handicraft, any article (7 years and under)  
 Class 99 Handicraft, any article (11 years and under)  
 Class 100 Handicraft, any article (16 years and under)  
 Class 101 Home grown vegetable (11 years and under)  
 Class 101a Home grown vegetable (12–16 years)  
 Class 102 Miniature garden on a dinner plate  
 Class 103 Model making (11–16 years)  
 Class 104 Painting (11–16 years)  
 Class 105 Photographic print, black & white or colour, any subject  
 Class 106 Any picture, any medium (4 years and under)

### Section N CEREALS

- Class 107 Wheat, one sample (28lbs hard)  
 Class 108 Wheat, one sample (28lbs soft)  
 Class 109 Barley, one sample (28lbs)

### CHILDREN'S PET SHOW

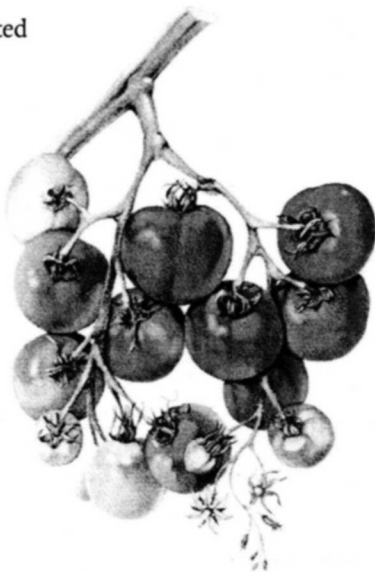
**Sorry no dogs**

First prizes only for these classes

- Class 110 Beadiest eyes  
 Class 111 Twitchiest nose  
 Class 112 Shiniest coat  
 Class 113 Best Veteran (any species)  
 Class 114 Pet most like its owner  
 Class 115 Best in Show

Pets are to be brought to the designated area in the school grounds by 2pm. Judging will take place immediately after the show has been opened.

- All pets to be in a basket or box and displayed on table tops.
- Owners to be responsible for handling and looking after their pets at all times
- No pets to be left unattended or allowed to roam in other areas of the school grounds



## THE RULES

- 1 Entrants must be residents or growers of Elsworth, Knapwell, Boxworth or Conington and produce must be grown in the district.
- 2 Everything entered must be grown or made by the Exhibitor except flowers used in floral arrangements.
- 3 An entry fee of 20p will be levied for each entry. Children aged 16 years and under, free (Section M only).
- 4 **Entry forms and entry fee of 20p for each entry to be taken to the Village School, Elsworth, on the Thursday and Friday preceding the show between 7pm – 9pm.**
- 5 **Exhibits must be brought to Elsworth School between 7pm and 9pm on Friday 27th August or between 8am and 10am on Saturday 28th August.**
- 6 Exhibits must not be removed before 4pm on the day of the show. The Committee will be very grateful for any exhibits left for auction at 4.30pm.
- 7 Exhibitors may make more than one entry in any one class. Each exhibit must be accompanied by an entry form and appropriate fee.
- 8 Exhibitors must provide own plates, vases etc. as they require. The Committee will not be responsible for any breakage or loss of such items.
- 9 Each class may be judged 1st, 2nd 3rd. Prizes awarded:  
1st: £2      2nd £1      3rd 50p  
Certificates will be awarded to those achieving a First in each children's class.
- 10 Where the entries are less than four in any one class, the awarding of more than one prize will be at the discretion of the judge.
- 11 In case of any dispute the Committee's decision will be final.

### **Annual challenge cups and prizes will be awarded as follows**

- A Elsworth and District Show Challenge Cup for person gaining highest points in show
- B Elsworth and Knapwell & Conington Women's Institute Challenge Cup for person gaining most points in Sections A, B, & C.
- C Boxworth Women's Institute Challenge Cup for person gaining most points in Section I
- D Girl's Cup for Section M
- E J Mitham Cup for children in Classes 98,99, 100
- F Elsworth Branch Royal British Legion Cup for Section G
- G Elsworth and District Show Cup, Donated by E R Bullen Esq., for Section F.
- H Elsworth, Knapwell and Conington Women's Institute Vase for Section H
- I Boy's Cup for Section M, donated by Boxworth Sports and Social Club.
- J Arnold Hodson Memorial Trophy for Section E.
- K Stevens Sports Challenge Cup awarded for a field event.
- L Swavesey Camera Club are offering 1 year free membership to the first prize winner in each class in Section K. (Only open to 16 year olds and over)

Points awarded    1st: 3 points    2nd: 2 points    3rd: 1 point

## SPONSORS

The 47th Elsworth & District Show has been sponsored by:

**Mills & Reeve, Solicitors**

Francis House, Hills Rd, Cambridge  
0870 600 0011

**Dairy Crest Limited**

01480 462338

**J Kilborn & Son – Electrical Contractors**

01954 780184

**Liz Hale – Physical Therapist**

01954 267034

**Kendals – Furniture Repair & Restoration**

0800 970 4455

**Elsworth Post Office – Julie**

01954 267200

**Bob Empson – Elsworth Garage**

01954 267231

**Eastern Marquees Co Ltd**

01954 252335

**Ashcroft Veterinary Surgery**

01954 210250

**Adrian Parfitt – Cabinet Maker**

01954 267312

**Cromwell Veterinary Group**

01480 52601

*Schedule designed by Elinor Cole*

Further entry forms and list of classes are  
to be found on the website:  
[www.elsworthvillage.org.uk](http://www.elsworthvillage.org.uk)

Show Chairperson & contact:

**Susan Chapman**

20, Church Lane, Elsworth, Cambridge 01954 267568